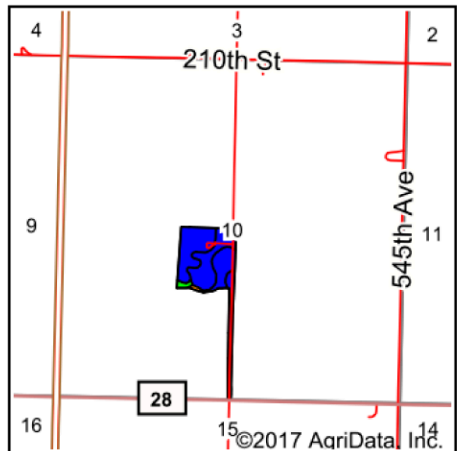


Soils Map



State: **Minnesota**
 County: **Meeker**
 Location: **10-118N-32W**
 Township: **Danielson**
 Acres: **21.6**
 Date: **10/31/2017**



Maps Provided By:
surety
 CUSTOMIZED ONLINE MAPPING
 © AgriData, Inc. 2017 www.AgriDataInc.com



Area Symbol: MN093, Soil Area Version: 10

Code	Soil Description	Acres	Percent of field	PI Legend	Non-Irr Class *c	Productivity Index	Bromegrass alfalfa	Bromegrass alfalfa hay	Corn	Reed canarygrass	Soybeans	Spring wheat
L185B	Strout-Arkton complex, 2 to 6 percent slopes	11.98	55.5%	[Blue]	lle	83	5.1	4	152		46	49
L34A	Cosmos silty clay, 0 to 2 percent slopes	7.70	35.6%	[Blue]	llw	81	4.9	3.2	148	5.5	45	49
L186A	Danielson-Danielson, overwash complex, 1 to 4 percent slopes	1.20	5.6%	[Green]	llw	93	5	3.8	170		51	49
L166C2	Newlondon-Strout complex, 6 to 12 percent slopes, moderately eroded	0.72	3.3%	[Orange]	llle	77	4.5	3.4	141		42	44
Weighted Average						82.6	5	3.7	151.2	2	45.8	48.8

*c: Using Capabilities Class Dominant Condition Aggregation Method

Soils data provided by USDA and NRCS.