

Henslin Auctions, Inc.

AUCTION

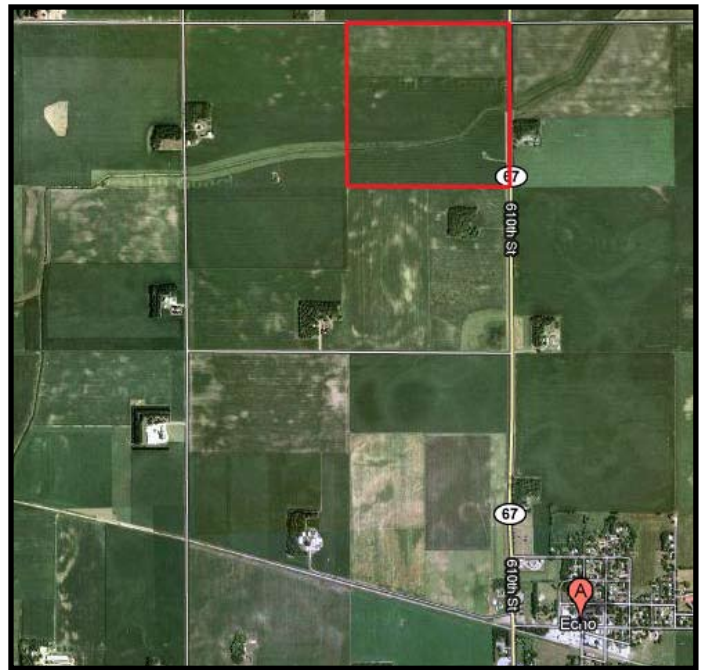
PRIME FARM LAND

160 Acres +/- of Yellow Medicine County Farm Land with Machine Shed Located in Sioux Agency Twp 114, Section 33, R-38-W, Yellow Medicine County, MN

Monday, Sept. 13th, 2010 • 10:30AM

Auction to be held at Echo Community Center, Echo, MN

Land Location: **ECHO, MN:** 1 1/2 Miles North on Hwy 67, West Side of Road • Watch for Henslin Auction Signs!



TERMS: To attend auction and receive a bidding number buyers must present auction company with \$25,000.00 certified funds. Remainder due upon closing. Buyers premium will apply. Possession after 2010 crop is removed. For more information call Henslin Auctions, Inc. 320-365-4120 email: allen@henslinauctions.com, or see our website www.henslinauctions.com

Auctioneer Notes: It gives Henslin Auctions great pride the Pehlings have once again selected us to conduct an auction for their family. This is highly productive land with good drainage, machine shed & highway frontage. Call today for informational packet. - Henslin Auctioneers



**Arvon & Darlene
Pehling Estate
Echo, MN**

Call For Your
Auction Today!



Bird Island, MN
Office: 320-365-4120
LaDon Henslin #65-25
Allen Henslin
Frank Roering
Brad Dallmann

DISCOVER! The Henslin Auctions Championship Advantage!



www.henslinauctions.com