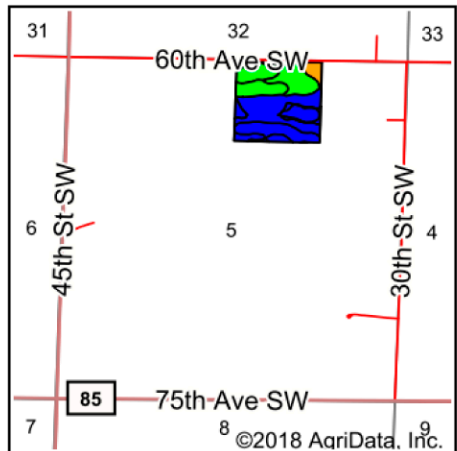
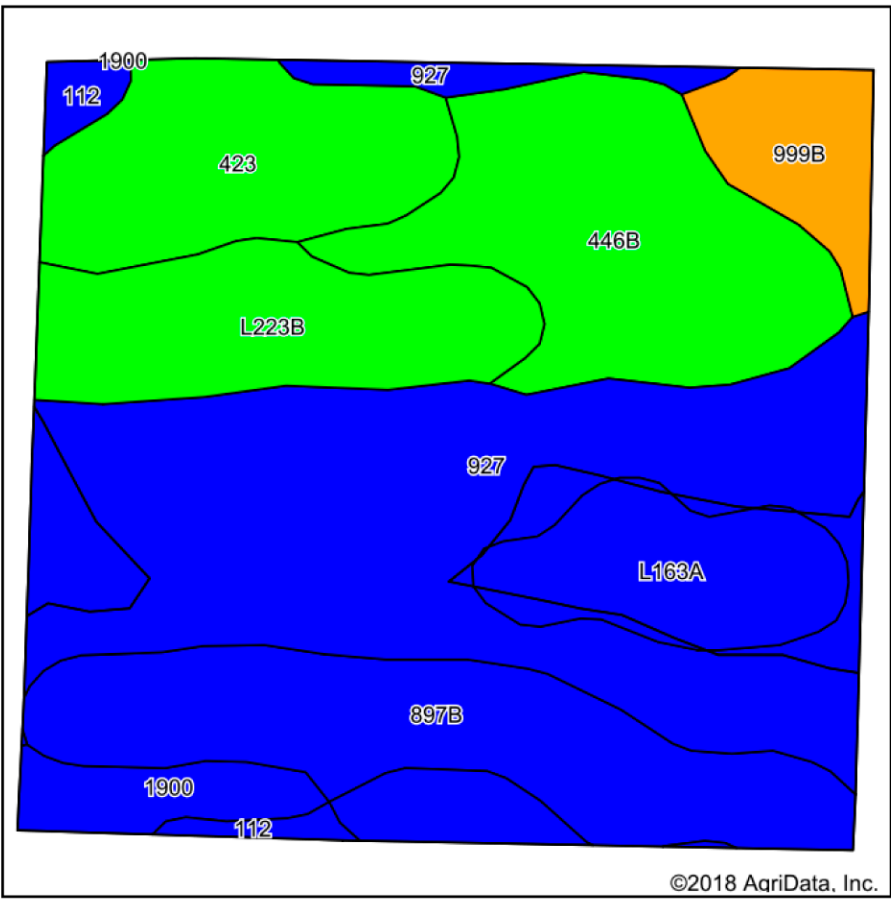


Soils Map



State: **Minnesota**
 County: **Kandiyohi**
 Location: **5-118N-35W**
 Township: **Whitefield**
 Acres: **38.13**
 Date: **10/2/2018**



Maps Provided By:
surety
 CUSTOMIZED ONLINE MAPPING
 © Agridata, Inc. 2018 www.AqriDataInc.com



Area Symbol: MN067, Soil Area Version: 16

Code	Soil Description	Acres	Percent of field	PI Legend	Non-Irr Class *c	Productivity Index	Bromegrass alfalfa	Bromegrass alfalfa hay	Cor n	Oats	Soybeans	Spring wheat	NCCPI Soybeans
927	Harps-Glencoe-Seaforth complex, 0 to 3 percent slopes	13.59	35.6%		llw	90							79
446B	Normania loam, 2 to 5 percent slopes	5.64	14.8%		lle	94	5.8	4.5	172	87	52	52	64
897B	Seaforth-Swanlake loams, 2 to 6 percent slopes	5.47	14.3%		lls	90	5.4	4.2	165	85	50	52	67
423	Seaforth loam, 1 to 3 percent slopes	3.85	10.1%		lls	95							84
L223B	Amiret-Swanlake loams, 2 to 6 percent slopes	3.76	9.9%		lle	92							80
L163A	Okoboji silty clay loam, 0 to 1 percent slopes	2.62	6.9%		llw	86							77
999B	Ves-Swanlake-Hawick complex, 2 to 6 percent slopes	1.58	4.1%		lle	74	5.1	3.9	135	80	41	48	49
1900	Okoboji-Canisteo depressional complex, 0 to 1 percent slopes	1.08	2.8%		llw	86							78
112	Harps clay loam, 0 to 2 percent slopes	0.54	1.4%		llw	90							77
Weighted Average						90.2	1.8	1.4	54.7	28.4	16.6	17.1	74.2

*c: Using Capabilities Class Dominant Condition Aggregation Method