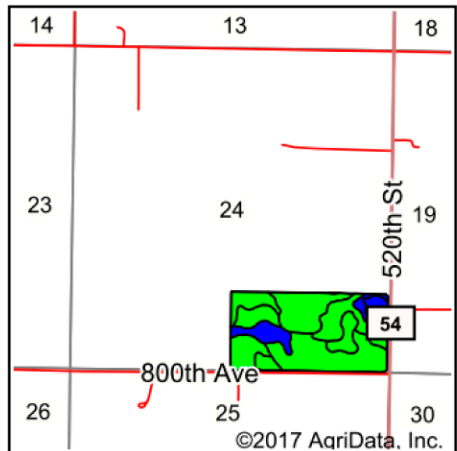
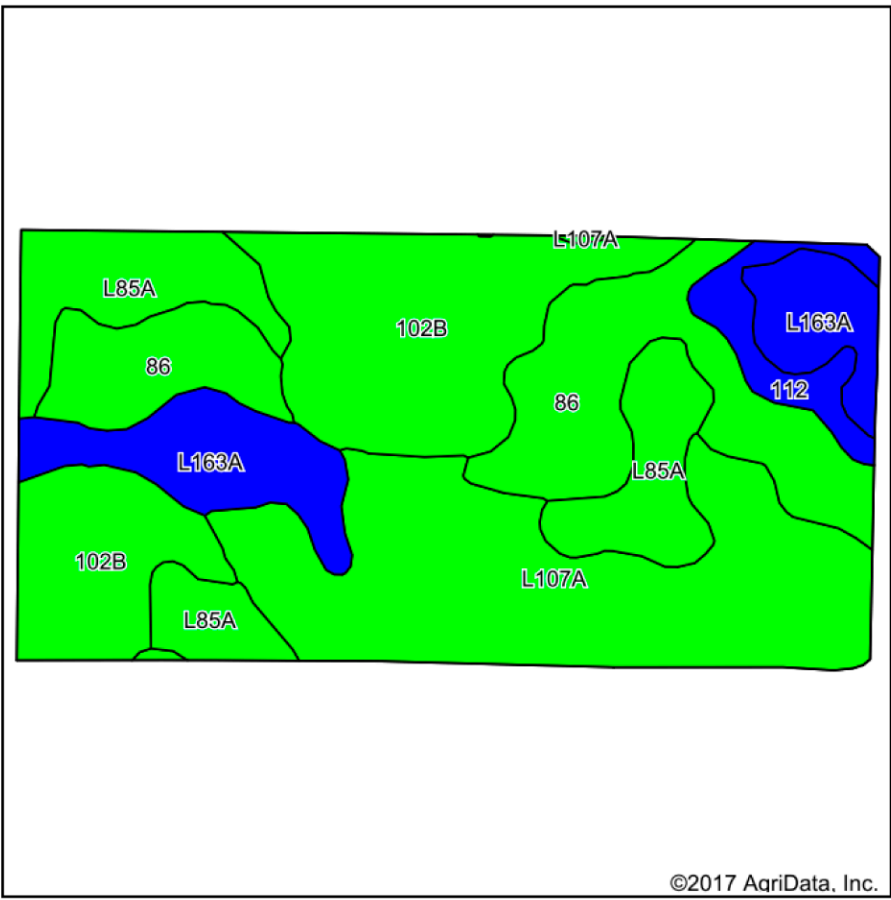


Soils Map



State: **Minnesota**
 County: **Renville**
 Location: **24-115N-32W**
 Township: **Hector**
 Acres: **77.63**
 Date: **12/6/2017**









Maps Provided By:

 CUSTOMIZED ONLINE MAPPING
 © AgriData, Inc. 2017 www.AgriDataInc.com



Area Symbol: MN129, Soil Area Version: 14

Code	Soil Description	Acres	Percent of field	PI Legend	Non-Irr Class *c	Productivity Index
L107A	Canisteo-Glencoe complex, 0 to 2 percent slopes	21.05	27.1%		IIw	91
102B	Clarion loam, 2 to 6 percent slopes	19.08	24.6%		Ile	95
86	Canisteo clay loam, 0 to 2 percent slopes	14.74	19.0%		IIw	93
L85A	Nicollet clay loam, 1 to 3 percent slopes	11.32	14.6%		Iw	99
L163A	Okoboji silty clay loam, 0 to 1 percent slopes	8.80	11.3%		IIIw	86
112	Harps clay loam, 0 to 2 percent slopes	2.64	3.4%		IIw	90
Weighted Average						92.9

*c: Using Capabilities Class Dominant Condition Aggregation Method

Soils data provided by USDA and NRCS.